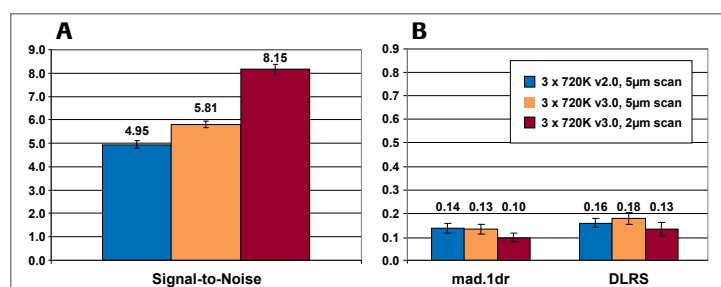
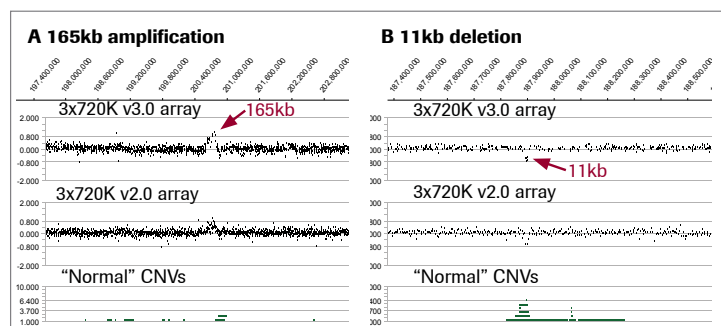


Sensitive & Reliable Array Performance

NimbleGen Human CGH 3x720K and 12x135K Whole-Genome Tiling v3.0 arrays consist of empirically tested probes that show improved signal-to-noise performance compared with the earlier v2.0 arrays. Figures 4 and 5 show the improved performance of the Human CGH 3x720K Whole-Genome Tiling v3.0 array compared with the v2.0 array. Similar results were obtained using the Human CGH 12x135K Whole-Genome v3.0 array (data not shown). The improved performance achieved with the v3.0 arrays is further enhanced using the NimbleGen MS 200 Microarray Scanner at 2µm resolution (Figure 4).



▲ Figure 4: (A) Compared with the v2.0 array (blue), the Human CGH 3x720K Whole-Genome Tiling v3.0 array (orange) offers improved signal-to-noise, which is further enhanced using the NimbleGen MS 200 Microarray Scanner at 2µm resolution (red). (B) A significant decrease in experimental noise, as measured by mad.1dr and DLRS, is achieved using the NimbleGen MS 200 Microarray Scanner at 2µm resolution.



▲ Figure 5: Compared with the v2.0 array, the Human CGH 3x720K Whole-Genome Tiling v3.0 array shows more robust detection of a 165kb amplification (panel A) and an 11kb deletion (panel B) in mental retardation samples versus normal genomic DNA. These CNVs correspond to “normal” CNVs annotated in the Database of Genomic Variants (<http://projects.tcag.ca/variation>).

Ordering Information

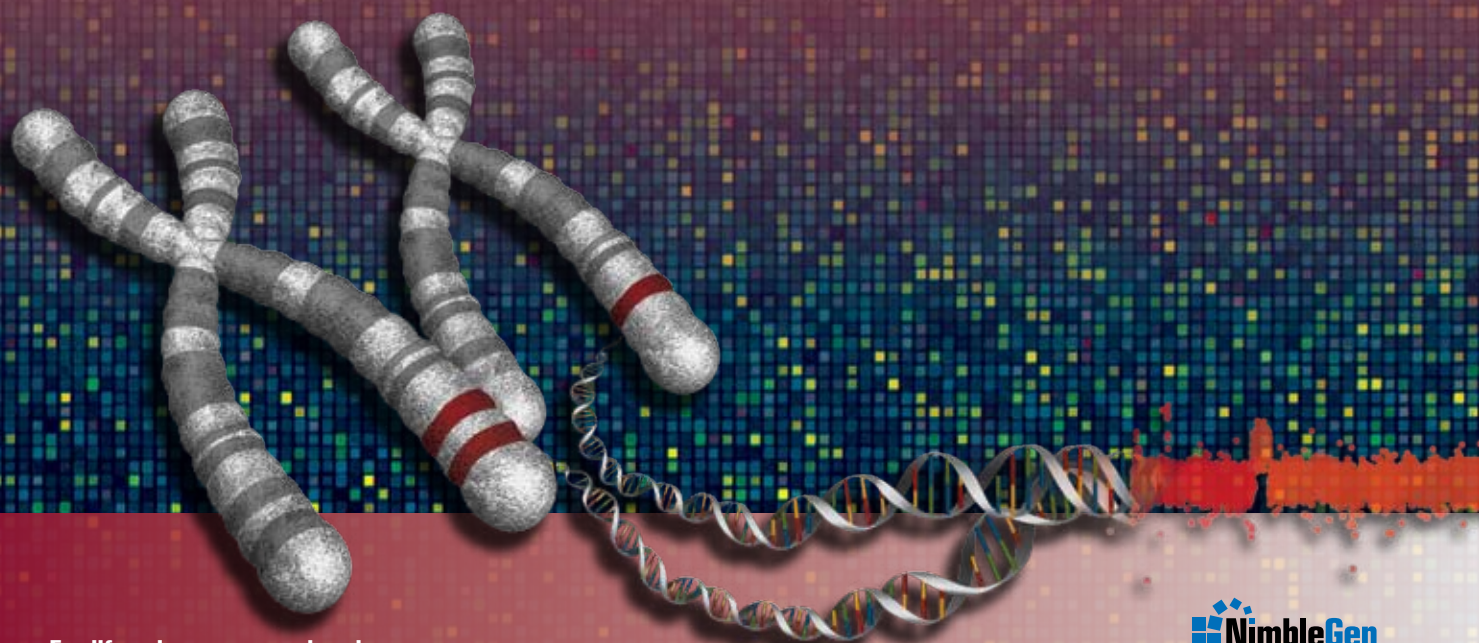
Microarrays	Delivery Cat. No.
Human CGH 2.1M Whole-Genome Tiling v2.0D Array	05 541 921 001
Human CGH 3x720K Whole-Genome Tiling v3.0 Array	05 520 797 001
Human CGH 3x720K Whole-Genome Exon-Focused Array	05 542 073 001
Human CGH 12x135K Whole-Genome Tiling v3.0	05 520 878 001
Human CNV 2.1M Array	05 913 152 001
Human CNV 3x720K Array	05 913 209 001
Reagents	Cat. No.
NimbleGen Dual-Color DNA Labeling Kit	05 223 547 001
NimbleGen Hybridization Kit	05 583 683 001
NimbleGen Hybridization Kit, LS	05 583 934 001
NimbleGen Wash Buffer Kit	05 584 507 001
NimbleGen Array Processing Accessories	05 223 539 001
NimbleGen Sample Tracking Control Kit	05 634 270 001
Instruments	Cat. No.
NimbleGen Hybridization System 4 (110V)	05 223 652 001
NimbleGen Hybridization System 12 (110V)	05 223 679 001
NimbleGen Hybridization System 4 (220V)	05 223 687 001
NimbleGen Hybridization System 12 (220V)	05 223 695 001
NimbleGen Microarray Dryer (110V)	05 223 636 001
NimbleGen Microarray Dryer (220V)	05 223 644 001
NimbleGen MS 200 Microarray Scanner	05 394 341 001
Software	Cat. No.
NimbleScan Software – Individual License	05 933 315 001
NimbleScan Software – Site License	05 933 331 001
SignalMap Software – Individual License	05 225 051 001

Roche NimbleGen provides a complete line of accessories optimized for use with NimbleGen microarrays. For more information on NimbleGen microarrays, contact us: www.nimblegen.com/arraysupport

*NimbleScan and SignalMap software are available from Roche NimbleGen.

NimbleGen Human CGH Whole-Genome Arrays

Catch all the breaks



For life science research only.
Not for use in diagnostic procedures.